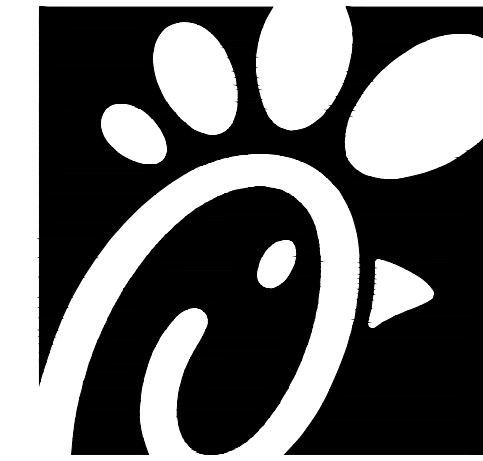
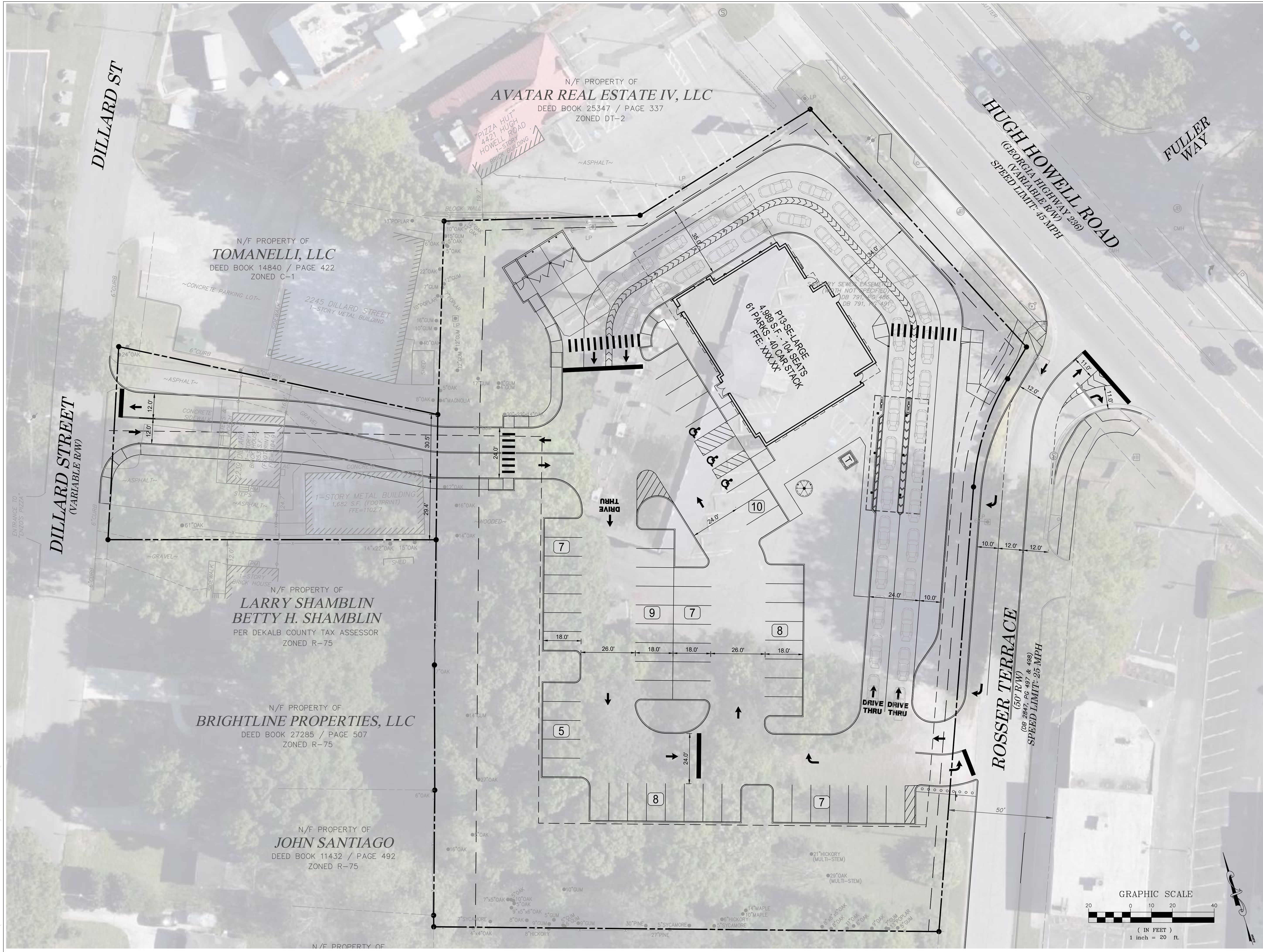


20 April 2022  
120005-01-049 (ENG) - Chick-fil-A\120005-01-049 (ENG) - Tucker, GA (Hugh Howell Rd) (04095) Engineering\Engineering Plans\Exhibits\AT Entrance Exhibit\EX-1.3 - CFA, Tucker, GA (Hugh Howell Rd) - Rosser Terrace, Exhibit.dwg  
THIS DOCUMENT, TOGETHER WITH THE CONCEPTS AND DESIGN PRESENTED HEREIN, IS AN INSTRUMENT OF SERVICE. IT IS LIMITED IN SCOPE TO THE SPECIFIC PROJECT AND CLIENT FOR WHOM IT WAS PREPARED. NO OTHER REUSE OR ADAPTATION OF THIS DOCUMENT WITHOUT WRITTEN AUTHORIZATION AND APPROVAL OF BOWMAN CONSULTING SHALL BE WITHOUT LIABILITY TO BOWMAN CONSULTING.



Chick-fil-A

Chick-fil-A  
5200 BUFFINGTON RD  
Atlanta, Georgia 30349-2998

Bowman

Certificate of Authorization License No. REF 095755  
950 North Point Parkway Suite 200  
Atlanta, GA 30005  
Phone: (678) 374-6687  
www.bowmanconsulting.com  
© Bowman Consulting Group, Ltd.

CHICK-FIL-A

RELO TUCKER FSU  
4435 HUGH HOWELL ROAD  
TUCKER, GA 30084

FSU#04959

BUILDING TYPE / SIZE: P13-SE-LRG

REVISION SCHEDULE		
NO.	DATE	DESCRIPTION

CONSULTANT PROJECT #	120005-01-049
ISSUED FOR	PERMIT
DATE	April 20, 2022
DRAWN BY	BCG

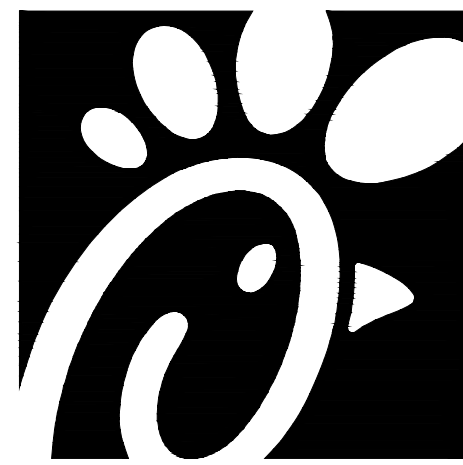
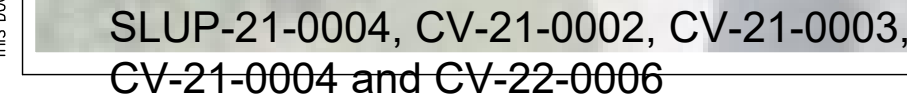
Information contained on this drawing and in all digital files produced for above named project may not be reproduced in any manner without express written or verbal consent from authorized project representatives.

SHEET  
DILLARD ST  
ACCESS EXHIBIT

SHEET NUMBER

EX-1.3





**Chick-fil-A**  
**5200 BUFFINGTON RD**  
**Atlanta, Georgia 30349-**  
**2998**

# Bowman

Certificate of Authorization License No. PEF-006755  
950 North Point Parkway Suite 200  
Alpharetta, GA 30005  
Phone: (678) 374-6887  
[www.bowmanconsulting.com](http://www.bowmanconsulting.com)  
© Bowman Consulting Group, Ltd.

# CHICK-FIL-A

**RELO TUCKER FSU**  
**44435 HUGH HOWELL ROAD**  
**TUCKER, GA 30084**

**FSU#04959**

BUILDING TYPE / SIZE: P13-SE-LRG

### REVISION SCHEDULE

<u>NO.</u>	<u>DATE</u>	<u>DESCRIPTION</u>
------------	-------------	--------------------

CONSULTANT PROJECT # 120005-01-049

ISSUED FOR	PERMIT
------------	--------

DATE April 1, 2022

DRAWN BY BCC

Information contained on this drawing and in all digital files produced for above named project may not be reproduced in any manner without express written or verbal consent from authorized project representatives.

SHEET DILLARD ST

DILLARD ST  
ACCESS EXHIBIT

ACCESS EXHIBIT

SHEET NUMBER **1410**

EX-12

## LA-1.2